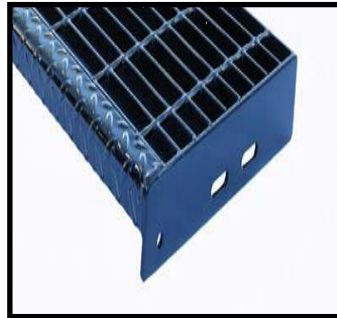
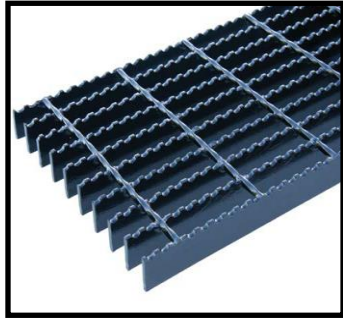
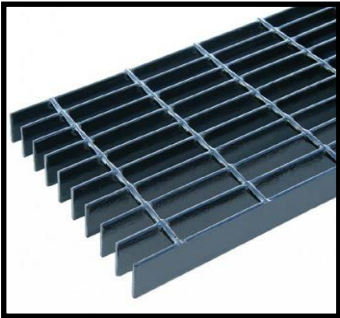


## Grating and Stair Tread



Minerd & Sons, Inc. has strategically partnered with grating producers to offer an extensive inventory of grating products. Whether supplying trench grating covers, stair tread, elevated platforms or catwalks, from the floor up, you can count on Minerd & Sons, Inc. to supply durable and reliable products. We offer a wide variety of grating products, including painted and galvanized panels along with stair treads and connection hardware. Complete your build with handrail and stringer channels.

### Key Capabilities

- Painted, Unpainted, Galvanized, Aluminum and Stainless grating products
- Stair Treads
- Cut-to-size
- Quick turn around and reliable delivery
- Easy Will-Call

### PRODUCTS

#### Structurals

WF Beams  
 I Beams  
 Junior Beams  
 Stringer Channels  
 Bar Size Channels  
 Standard Channels  
 MC Ship & Car Channels  
 Bar Size Angles  
 Structural Angles  
 Tees  
 Rails

#### Bars

Round Bars  
 Rebar  
 Hexagons  
 Squares  
 Strips  
 Flats

#### Plates & Sheet

Plate  
 Floor Plate  
 Sheet

#### GRATING

Galvanized  
 Painted/Unpainted  
 Stair Tread /Panels


#### Tube & Pipe

Square Tubing  
 Rectangular Tubing  
 Pipe  
 Mechanical Tubing



Minerd & Sons, Inc. • 101 Red Nine Lane • Lawrence, Pennsylvania 15055 USA  
 Phone: 724-745-2878 • Fax: 724-745-4282 • Email: sales@minerdandsons.com

WEBSITE: WWW.MINERDANDSONS.COM



**CALL MINERD & SONS, INC. FOR ALL YOUR CARBON, STAINLESS,  
ALUMINUM AND PLASTIC NEEDS**

**Alloy/Tool Steel**

- Low Carbon-Case Hardening
- Annealed-Med Carbon HR/CF
- Q&T-Med Carbon HR/CF
- Alloy Steel Aircraft Quality HR/CF
- Tool Steel Rounds
- Tool Steel Squares
- Tool Steel Flats
- Tool Steel Hexagon & Octagon
- Tool Steel Sheet

**Aluminum**

- Sheet
- Coiled Sheet
- Plate
- Round
- Square
- Hexagon
- Flat
- Structural Shapes
- Tubing
- Pipe
- Roofing & Siding
- Special Extrusions

**Bars**

Hot Rolled

- Rounds
- Squares
- Strip
- Flats
- Half Ovals/Half Rounds

Cold Finished

- Rounds
- Hexagons
- Squares
- Flats

**Copper, Brass, Bronze**

- Round Solid Bar
- Round Hollow Bar
- Hexagon Rod
- Square Rod
- Plate

**Grating**

- Unpainted / Painted
- Galvanized
- Stainless
- Aluminum
- Smooth / Serrated
- Exp Metal Grating

- Stair Treads
- Stringers / Kick Plates
- Banded / Cut to Size
- Fabricated
- Anchor Clips
- Hand Rail Pipe

**Iron**

Ductile

**Plastic - Shapes, Bars, Plates, & Fittings**

- PVC & CPVC
- Polypropylene
- Polyethylene
- Fiberglass
- Acrylics & Nylon

**Plate**

- Structural Quality
- Pressure Vessel Quality
- Free Machining
- Low Carbon
- Medium Carbon
- Abrasion Resisting
- High Strength/Low Alloy
- Pickled & Oiled
- Tread Plate
- Alloy
- Stainless
- Aluminum
- Plastic
- CCO- Chromium Carbide Overlay
- AR Sheet

**Sheet**

- Hot Rolled Sheet & Strip
- High Strength/Low Alloy
- Cold Rolled Sheet
- Coated Sheets
- Coils-Sheet
- Expanded Metal

**Stainless Steel, Nickel Alloys**

- Sheet
- Sheet Coil
- Plate
- Round
- Square
- Hexagon
- Angles
- Flats
- Pipe
- Tube

**Structurals**

Angles

- Bar Size
- L (structural)
- Galvanized
- Pickled & Oiled
- Cor-Ten
- Stainless
- Aluminum
- Fiberglass

Beams

- S Beams
- W Beams
- M Beams
- Galvanized
- Aluminum
- Fiberglass

Channels

- Bar Size
- C (structural)
- MC (ship & car or junior)
- Galvanized
- A588 / A572 GR50
- Aluminum
- Fiberglass

Concrete Reinforcing Products

- Reinforcing Bars
- Reinforcing Accessories
- Wire Fabric

High Strength Steels

- A588 Angles
- A588 & A572 GR50

Rails

Rolled Structural Sections

Structural Tubing & Pipe

Tees

- Bar Size
- T (structural)
- MT,ST, WT
- Galvanized
- Aluminum

**Tubing & Pipe**

- Round Mechanical Tube
- Round Hydraulic Cylinder Tube
- Round Hydraulic Fluid Line Tube
- Structural Tubing
- Pipe
- Alloy Tubing
- Stainless Steel Pipe
- Aluminum Tubing & Pipe
- Plastic Tubing & Pipe

**Processing**

- Angle Rolling
- Flame Cutting
- Heat Treating
- Plating
- Stress Relieving
- Annealing
- Flattening
- Honing
- Precision Grinding
- Tensile Testing
- Bull Dozing
- Forming
- Laser Cutting
- Press Braking
- Tumbling
- Charpy V Notch Testing
- Grinding
- Mechanical Testing
- Punching
- Turning
- Coating
- Gun Drilling
- Milling
- Rolling Cones
- UT Testing
- Cold Sawing
- Hardness Testing
- Plasma Cutting
- Rolling Cylinders
- Water Jetting
- Rough Turning
- Saw To Length
- Scalping / Peeling
- Shearing
- Welding

Minerd & Sons, Inc.  
101 Red Nine Lane  
Lawrence, PA 15055

**P: 724-745-2878**

**F: 724-745-4282**

[www.minerdandsons.com](http://www.minerdandsons.com)

You will find our sales staff to be very knowledgeable and helpful.